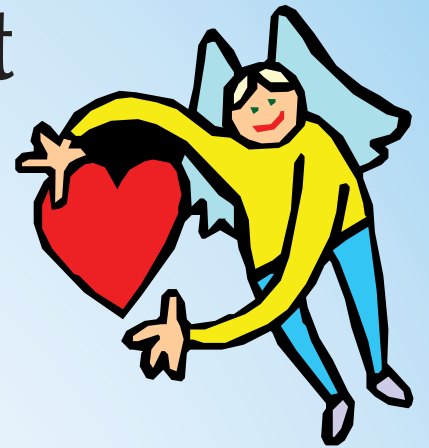


Orangevale Country Journal

June 27th, 2008

Volume I Number 11

Refocusing 1,000 Points of Light Spotlight on the Big Hearts of Orangevale



Page 2

Page 8

Special Community Advisory Street / Lane Traffic Closures

(Source: Sacramento County Municipal Services Agency)

6/16/2008 to 6/23/2008--8:00 AM to 2:00 PM / 10:00 PM to 6:00 AM--Sacramento County, southwest of Citrus Heights. On Madison Avenue Eastbound, 1 lane will be closed from 8:00 AM till 2:00 PM. 2 lanes will be closed Eastbound Madison from 10:00 PM till 6:00 AM. Closure will be between Hemolck Street to Garfield Avenue. Suggest Auburn Blvd as alternate route. REASON FOR CLOSURE: Water supply installation.

6/9/2008 to 7/31/2008--8:30 AM to 3:30 PM--McClellan Business Park area: I-80 Overpass to Ogilby Way. The #1 Lane and various left turn pockets will be closed on Madison Avenue between Highway 80 overpass and Ogilby Way. REASON FOR CLOSURE: Median Landscaping and signal interconnect upgrades.

6/16/2008 to 6/30/2008--9:00 PM to 6:00 AM--(Orangevale/Fair Oaks/Hazel Corridor) on Hazel Avenue 400 ft north of Madison Avenue. Lanes will be closed on Hazel Avenue both northbound and southbound alternating, one lane will be open in each direction at all times. REASON FOR CLOSURE: Installation of underground utilities.



Page 7



Local Boys Take Top Honors	2
Editorial	3
MicroEconomics	4
Community Calendar.....	5
Dining In & Out.....	6
Big Hearts in Orangevale	7
Seniors	8
Sports	9
Staycations vs Vacations.....	10
Lifting the 'Vale.....	11
Stories Behind the Faces.....	12
Puzzles	13
Comics	14
Classified	15

Pre-Sort Standard
PERMIT
NO.12
Orangevale
California
95662